



AERO BUILD

INFORMATION PACKET 2024

ABOUT



In 2019, Aero Build founder Brian Fuente saw a vintage camper trailer that had been converted into a mobile bar. He recognized both the need and opportunity that existed in not just retrofitting aged campers, but building new ones from the ground up, and incorporating those classic head-turning expressions with modern technology and function.

With some sweat, trial and error – Aero Build was born. We now provide not just the freedom of the open road, but an effortless and modern experience along the way.



A MESSAGE FROM OUR CEO

Aero Build was born out of a passion for bringing sophistication and style to an age-old concept. Here at Aero Build, we turn brick-and-mortar dreams into mobile realities, we focus on builds that become an extension of the personalities and brands that belong to you. From mobile businesses to stylish campers, if you can dream it, we can build it.

I started Aero Build following the success of my first company, The Aero Bar. After recognizing a growing interest in our trailers we built for The Aero Bar, I gathered a team together and began building similar trailers. Beginning with our standard model we built for a children's clothing store, Aero Build quickly grew to become a leader in cutting-edge mobile trailers for both business and adventure purposes. The rest, as they say, is history.

We look forward to getting to know you, and we cannot wait to get started on building your dream.

Warmest Regards,



Brian Fuente, CEO





AERO BUILD

MOBILE BUSINESS TIPS



TIPS FOR STARTING A MOBILE BUSINESS

BY KAYLA PALMER

If you're thinking about starting a mobile business, you're in good company. From coffee shops to flower shops, this is a profitable option for entrepreneurs. But before you hit the road, there are a few things you'll need to keep in mind. Here are 5 tips to help you get started.

Determine your start-up costs

One of the first things you'll need to do is determine your start-up costs. This will include the cost of the trailer itself, equipment and supplies, licenses and permits, insurance, and marketing materials. You'll also need to factor in any fees associated with renting space at events, festivals, and other locations. Be sure to create a detailed budget and consider all of the costs associated with starting and running your business.



AERO BUILD

Acquire the necessary licensing and permits

Before you hit the road, you'll need to acquire the necessary licenses and permits to operate your mobile concession trailer. We recommend taking the time while your trailer is in production to map out this step.

This will likely include a business license, food handler's permit, health department inspections, and any other permits required by your local or state government. Be sure to research the specific requirements for your area and make sure you have all the necessary paperwork in order before you start operating.

Network and scout out future locations

Networking is key for any mobile business. It's important to establish relationships with event organizers, festival coordinators, corporate partners, and other businesses in your area that could host your trailer or services. This will help you secure prime locations for your mobile concession trailer and increase your visibility to potential customers.

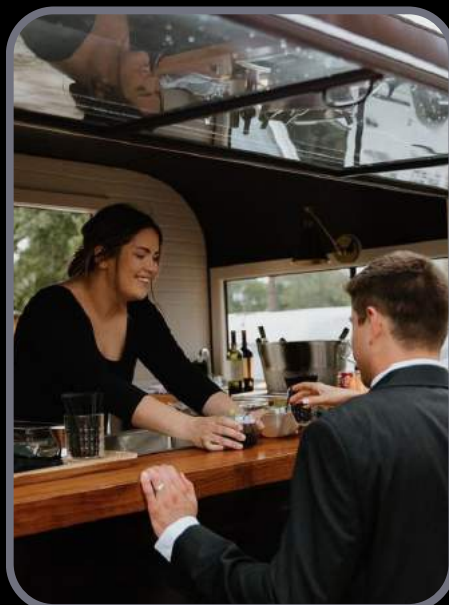
Scouting out future locations and events is also important. Consider attending events as a customer or observer to get a sense of the traffic flow and competition. This will help you make informed decisions about where to set up shop.

Embrace social media

Social media is a powerful tool for mobile businesses. It can help you build your brand, connect with potential customers, and promote your products and services. Create a social media strategy that includes regular posts, engaging content, and promotions. Consider documenting your journey as you get your business up and running!

During the build process we send you frequent photo updates on your trailer so you will have progress photos and videos to share with you audience.

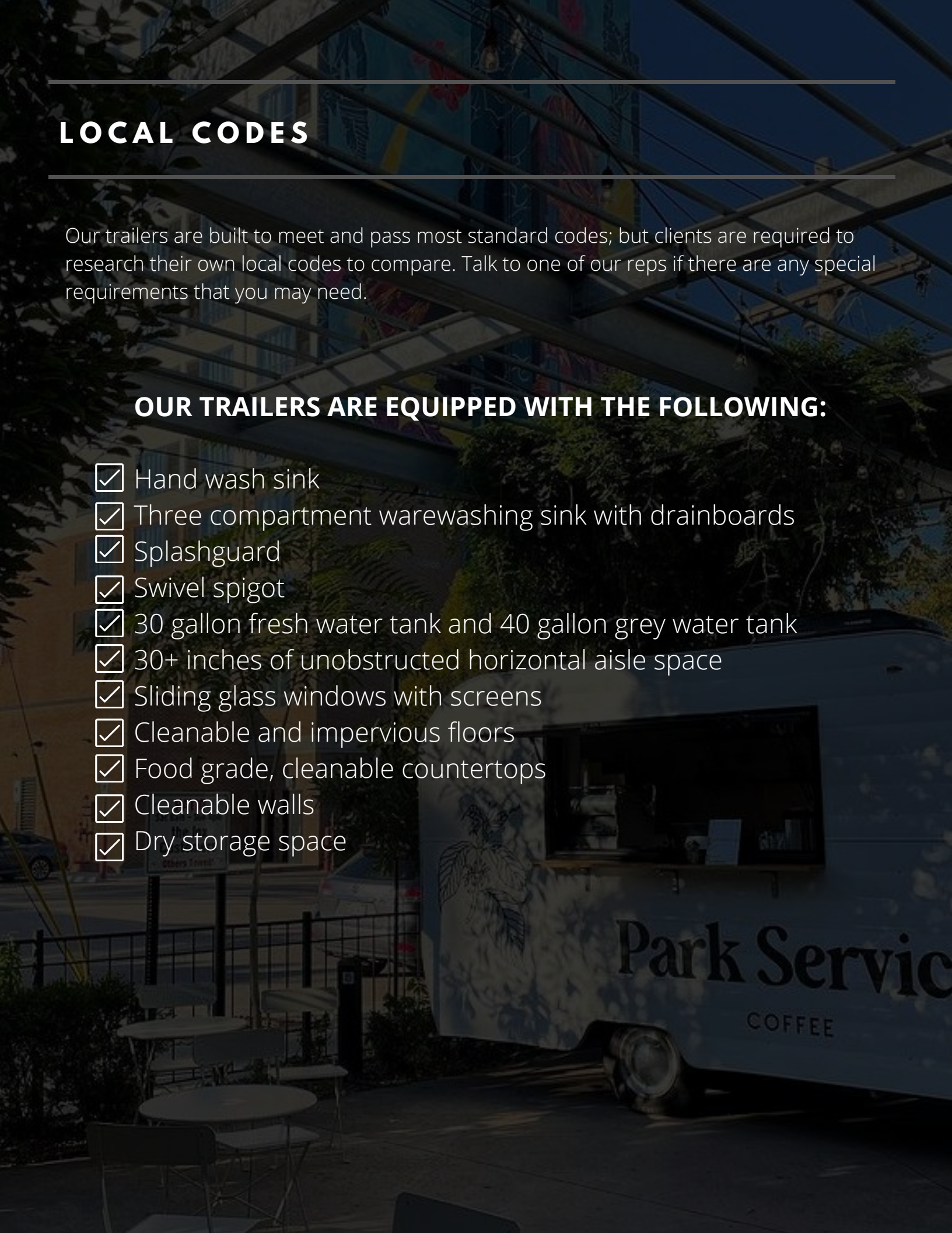
GALLERY



LOCAL CODES

Our trailers are built to meet and pass most standard codes; but clients are required to research their own local codes to compare. Talk to one of our reps if there are any special requirements that you may need.

OUR TRAILERS ARE EQUIPPED WITH THE FOLLOWING:

- Hand wash sink
 - Three compartment warewashing sink with drainboards
 - Splashguard
 - Swivel spigot
 - 30 gallon fresh water tank and 40 gallon grey water tank
 - 30+ inches of unobstructed horizontal aisle space
 - Sliding glass windows with screens
 - Cleanable and impervious floors
 - Food grade, cleanable countertops
 - Cleanable walls
 - Dry storage space
- 

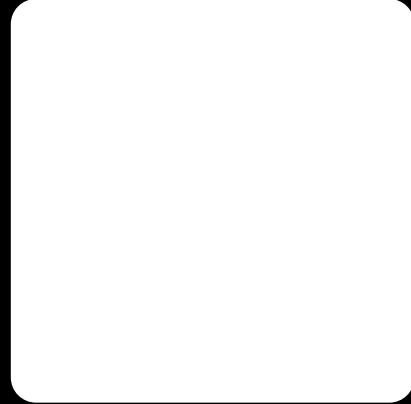
BASE MODEL DESIGN

EXTERIOR:



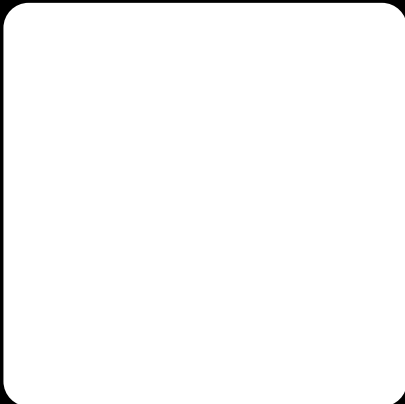
White

INTERIOR WALLS:



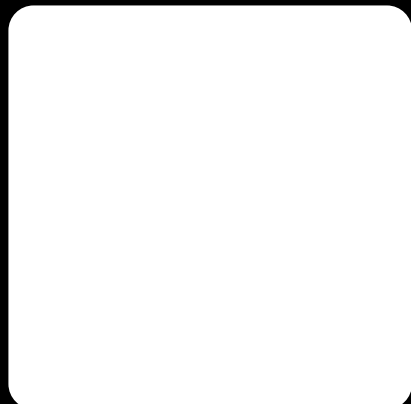
White

CABINET COLOR:



White

COUNTERTOPS:



Non-Porous Material

LIGHTING:



Industrial Black

FLOORING:



Commercial Non-Slip Flooring

PRO MODEL UPGRADE

2x Exterior Folding Service Shelves



White Oak or Walnut

2 x Exterior Window Trim



White Oak or Walnut

Black or White Exterior



Accent Wall



Shiplap or Faux Brick

Logo Package



Exterior and Interior Logo

Spare Tire



COFFEE EQUIPMENT PACKAGES

**Espresso Machine:
Nuova Simonelli Appia II**



Single Group or 2 Group

**Espresso Grinder:
Eureka Olympus 75e**



**Batch Brewer:
Fetco CBS-1231**



**Batch Grinder:
Mahlkonig GH2**



**Knock Box &
Pitcher Rinsers**



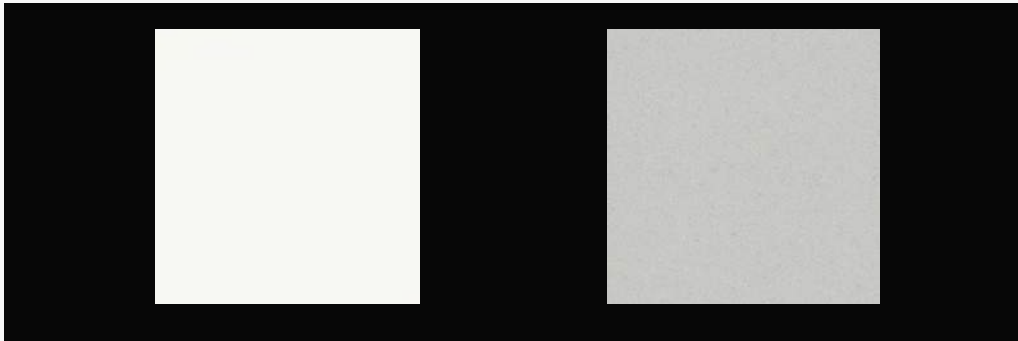
Micron Water Filter



Installation, Equipment Mounting, and Training Included.

CHOOSE YOUR SOLID SURFACE COUNTERTOPS:

These countertops are easy to clean, non-porous, and help you stand apart from the crowd with their chic appearance.



Designer White

Titanium Grey

CHOOSE YOUR LIGHTING:

This light fixture will be set on the main accent wall next to your shelving. It can be used to illuminate a logo or menu board!



Gold Picture Frame



Industrial Black

COMMERCIAL GRADE FLOORING:

Easy to clean, slip proof and durable. This flooring is perfect for high traffic use.

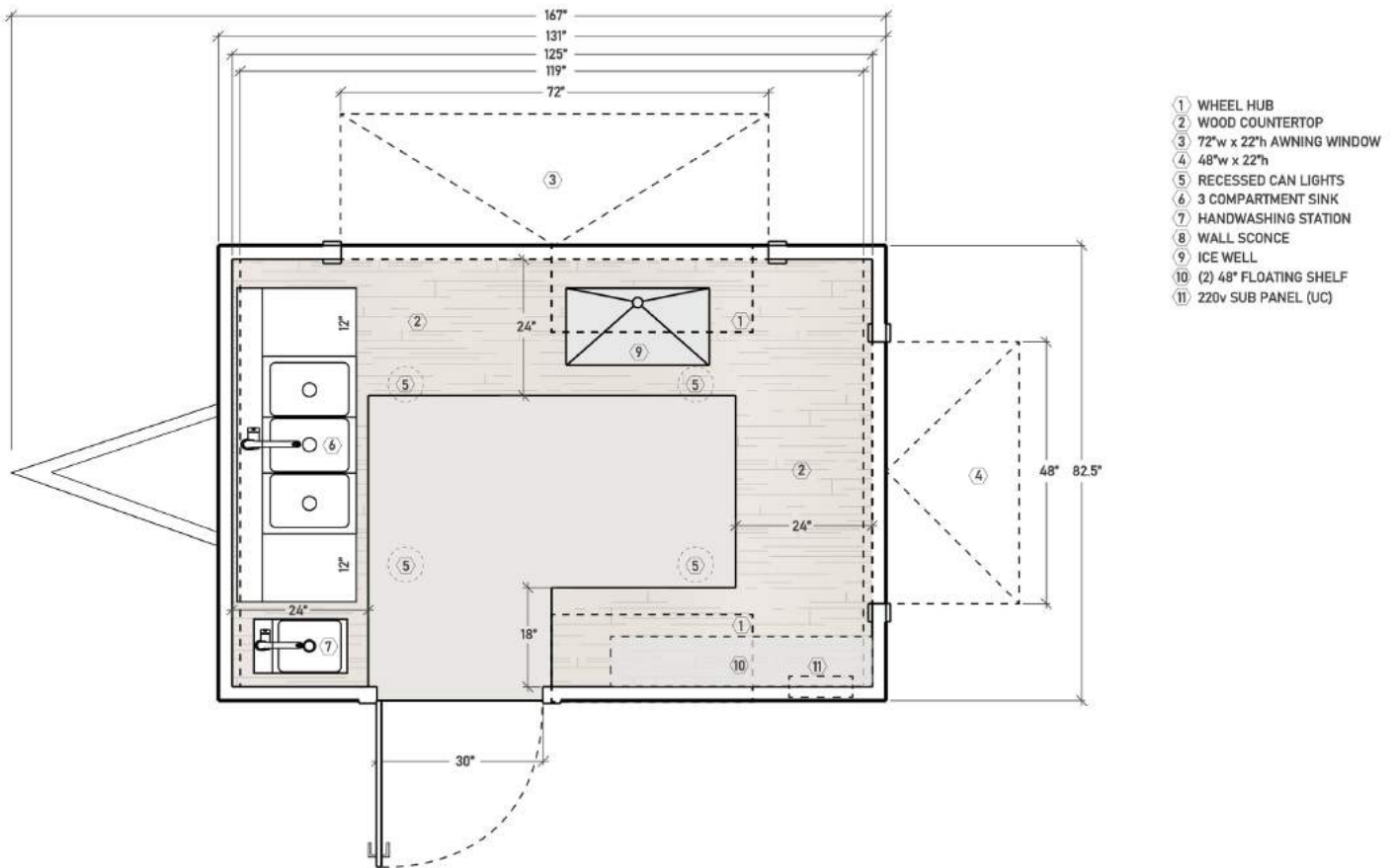


Commercial Non-Slip Flooring

13' SPECIFICATIONS

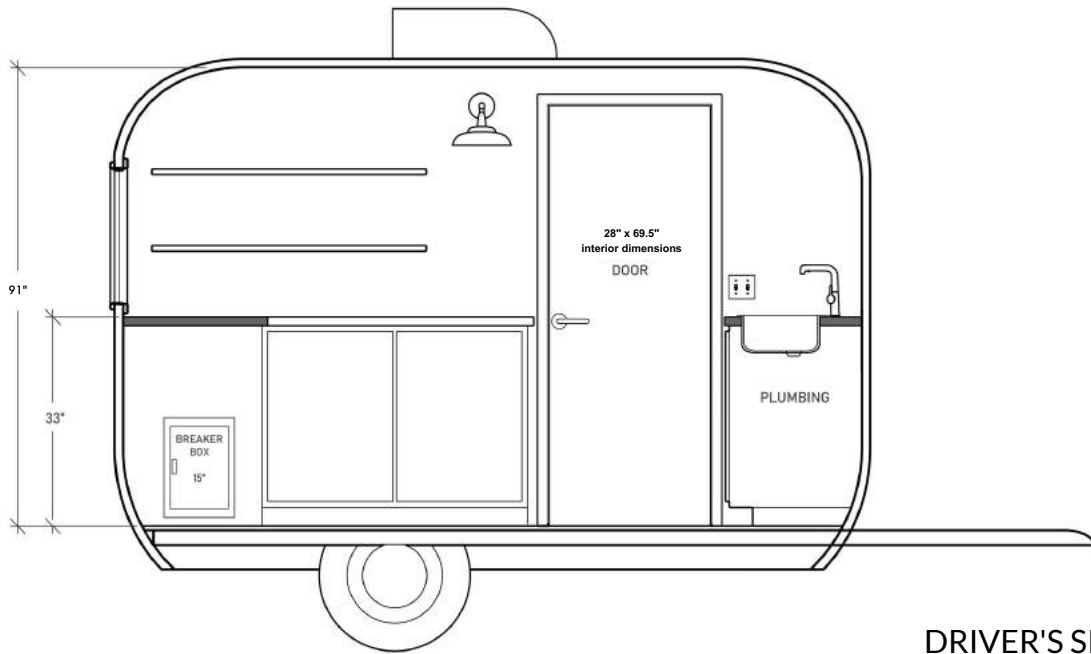
TRAILER SPECIFICATIONS :

- 82.5"W x 120"H x 13'L
- Interior height: 82"
- Door: 32" x 72.25"
- Electronic Trailer Brakes

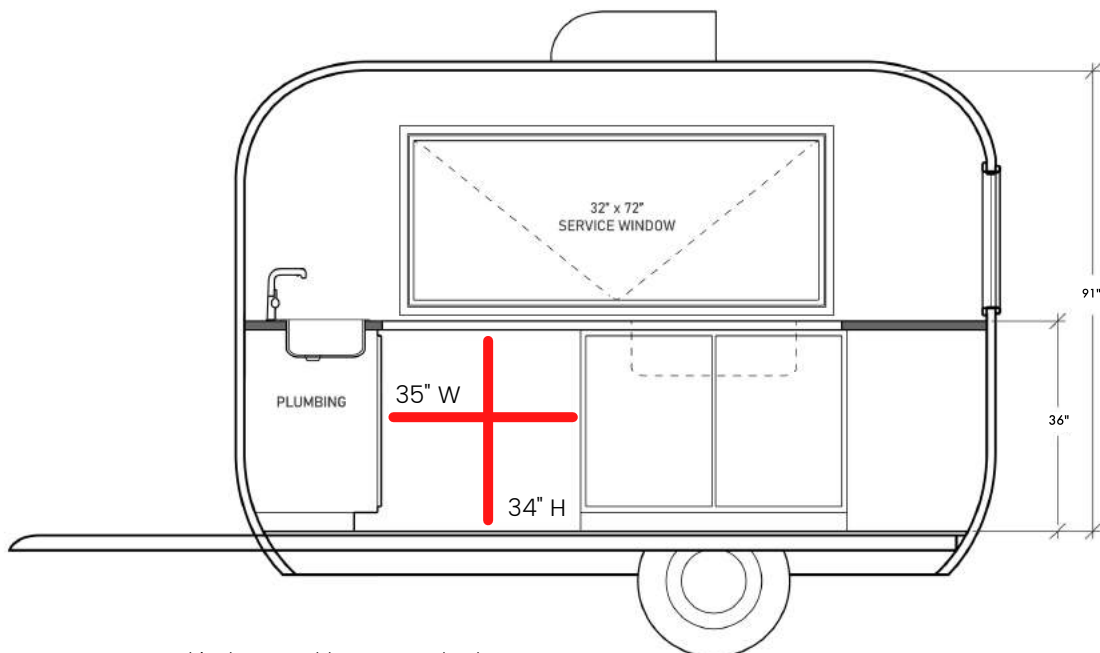


13' LAYOUT

INTERIOR ELEVATIONS 13'

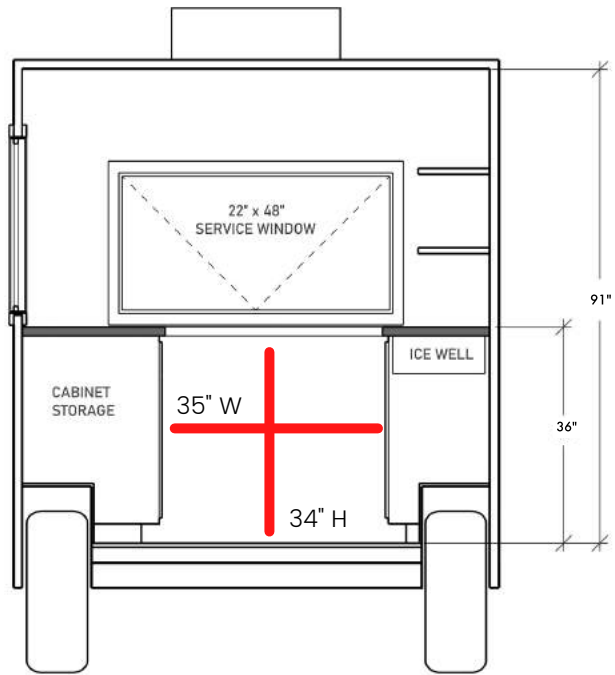


DRIVER'S SIDE



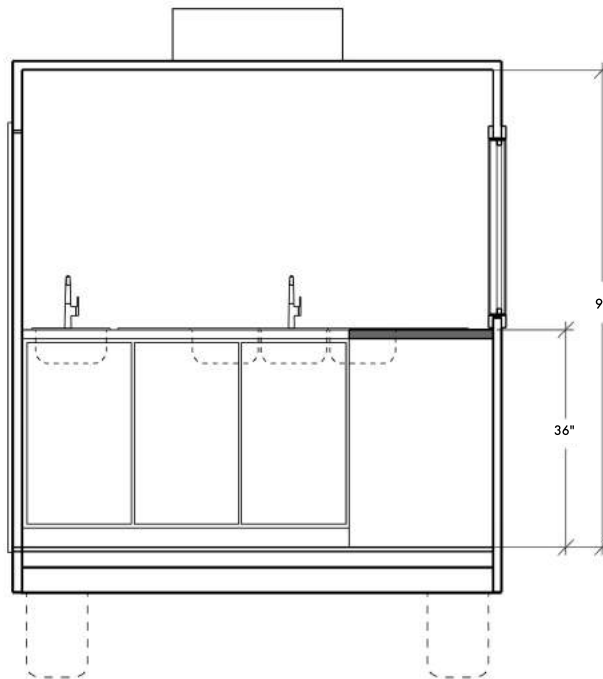
Note: This shows usable space under the counter for extra storage or equipment. The counter is 24\" deep.

PASSENGER'S SIDE



REAR

Note: This shows usable space under the counter for extra storage or equipment. The counter is 24" deep.

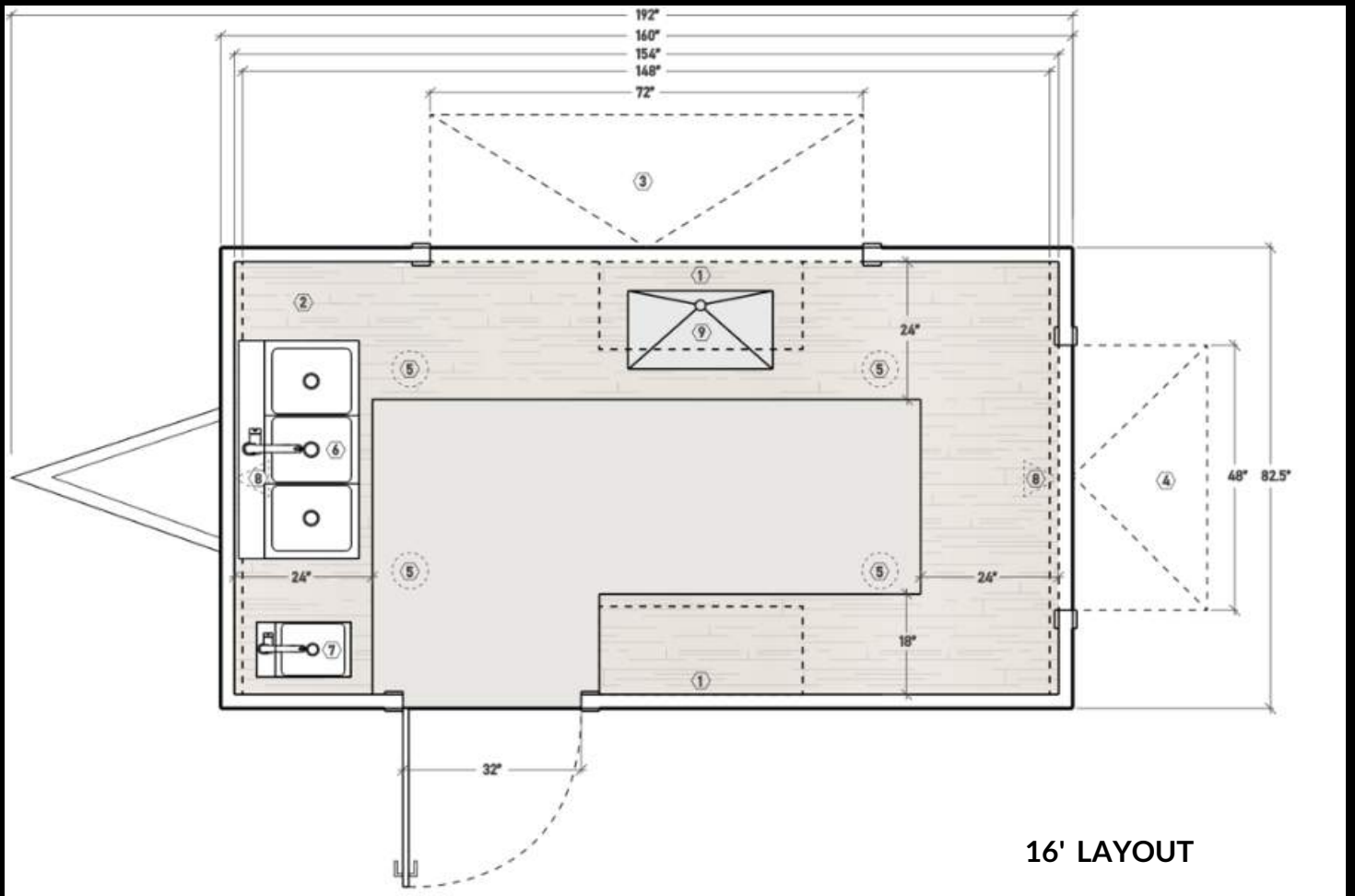


FRONT

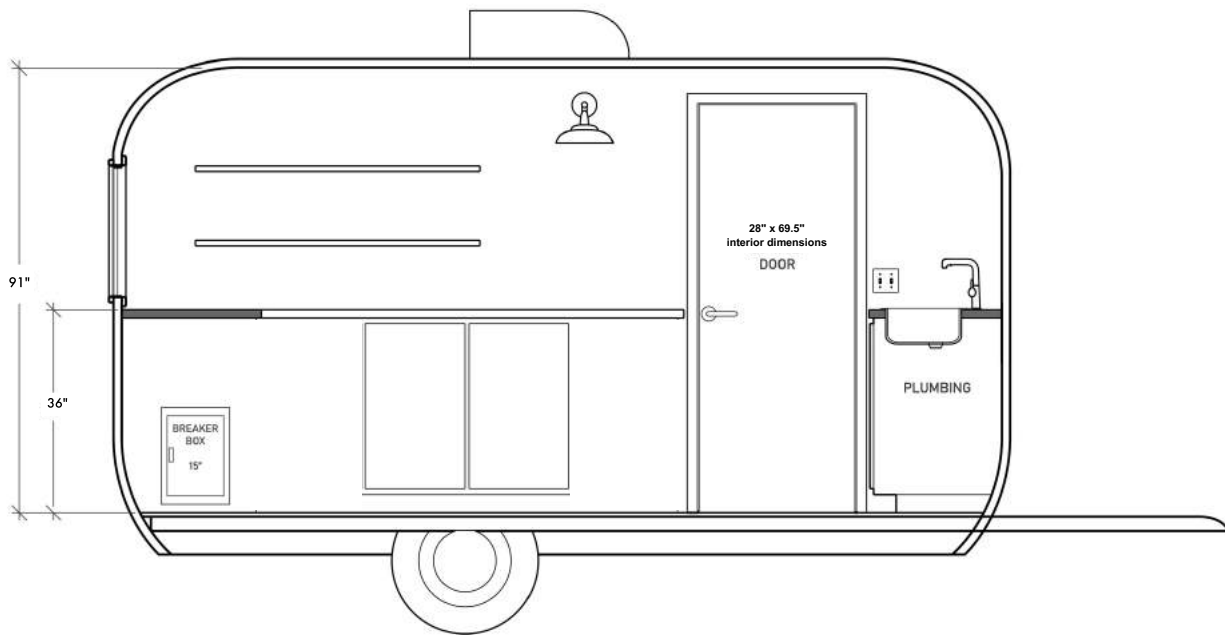
16' SPECIFICATIONS

TRAILER SPECIFICATIONS :

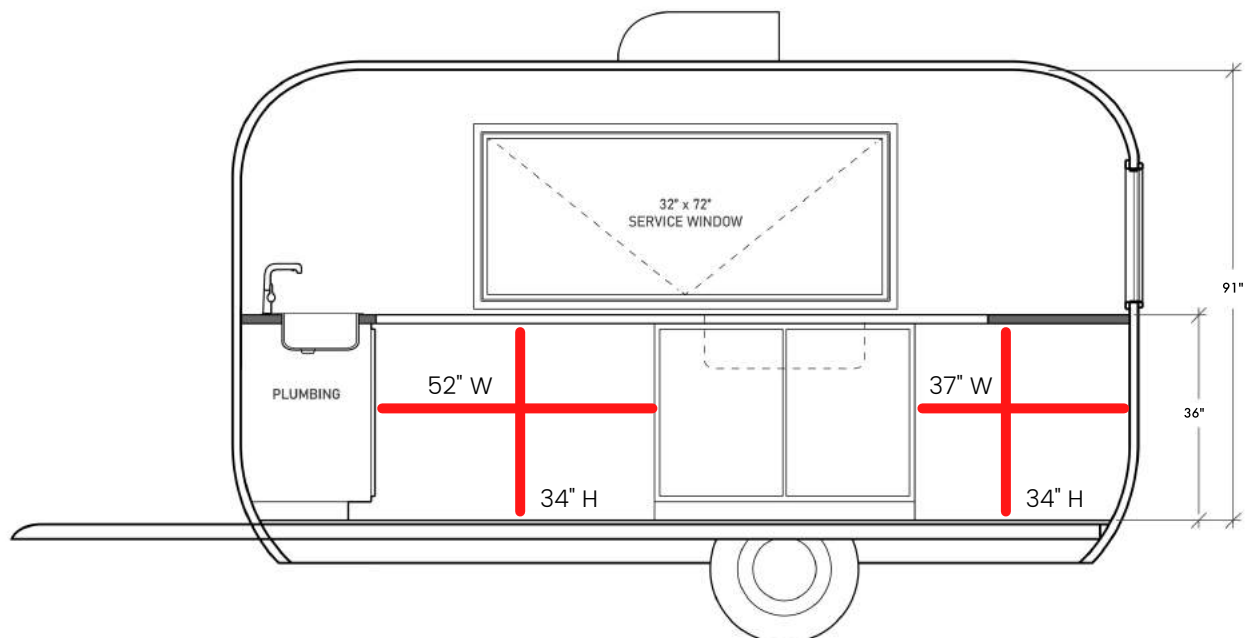
- 82.5"W x 120"H x 16'L
- Interior Height: 82"
- Door: 32" x 72"
- Electronic Trailer Brakes



INTERIOR ELEVATIONS 16'

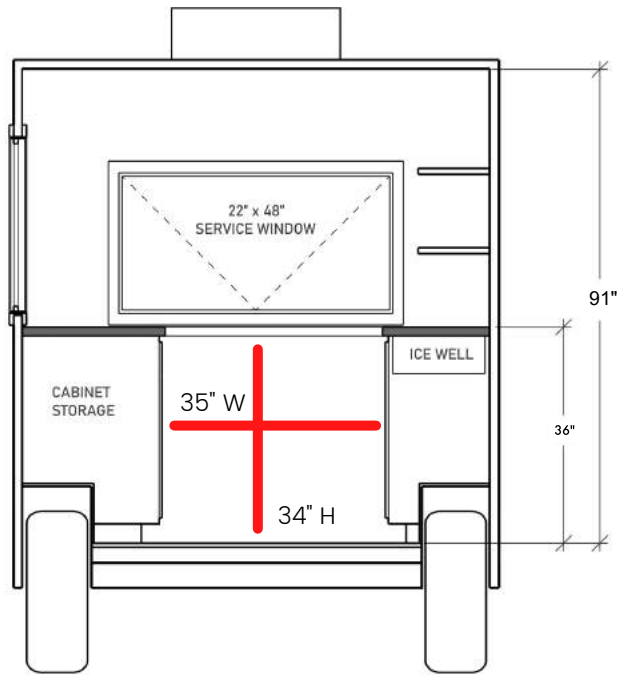


DRIVER'S SIDE



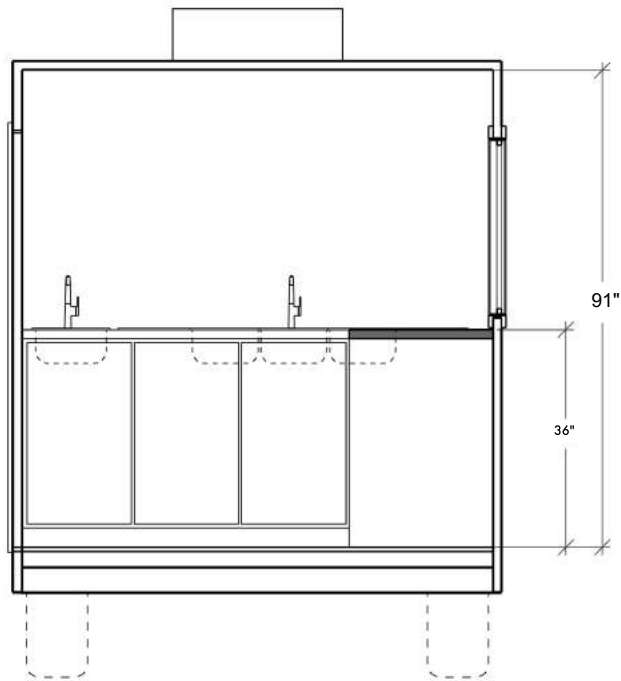
Note: This shows usable space under the counter for extra storage or equipment. The counter is 24\" deep.

PASSENGER'S SIDE



Note: This shows usable space under the counter for extra storage or equipment. The counter is 24" deep.

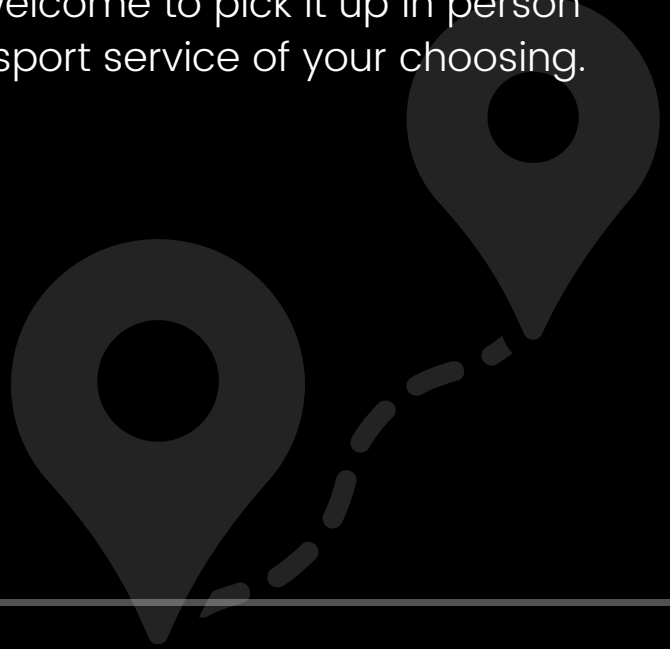
REAR



FRONT

PICK UP OR DELIVERY

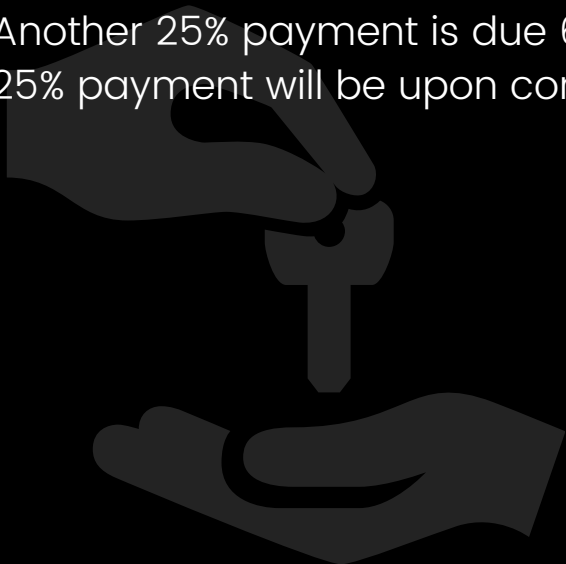
Once your trailer is complete you are welcome to pick it up in person or have it delivered to you using a transport service of your choosing.



HOW DO I GET STARTED?

To secure a build with our company, we require a signed proposal and a 50% deposit.

Another 25% payment is due 60 days after your initial deposit. The final 25% payment will be upon completion of the trailer.



TESTIMONIALS



BEAUTIFUL & INNOVATIVE

"We love our bar and constantly get compliments on how beautiful it is! We look forward to working with Aero Build again in the future."

- Jess Napier, Bramblewood Bar

ONE IN A MILLION

"We first came across Aero Build on Pinterest while searching for the stunning exterior trailer inspiration. We loved the classic look of the trailers so much that, after a bit of time, we decided to give Aero Build a call to see if they could make our crêpe truck a reality. CEO, Brian Fuente, was our first contact with the company – he was extremely helpful and kind in answering our questions. That first call sealed the deal for us. We knew the Aero Build team was going to make our dream trailer! The team was great to work with throughout the planning and building process and the product they created was phenomenal. Even when we ran into some major weather on the drive home with our trailer, Brian and the Aero Build team went above and beyond to help us out, get us home safely, and make sure our trailer was in its best condition before heading back to Iowa again. We are thrilled with our trailer (we believe the Aero Build trailers are the best out there – and customers and other food truck owners seem to think so too) and so thankful for the team's outstanding work! !!!"

- Joshua + Lauren Dahl, Nova Patisserie



TESTIMONIALS



TRULY GRATEFUL

"Aero Build helped make our dreams a reality! We couldn't be happier with our outcome. The team at Aero Build provided us with excellent customer service. CEO, Brain Fuente, was very much involved through our process, and his help in finding solutions was always reassuring and appreciated. They guaranteed our satisfaction, and we are truly grateful for their guidance as we started our very own small business! You cannot go wrong with choosing Aero Build for your mobile endeavors."

- Laura Spair, Owner, The Fresh Bar

A PLEASURE TO WORK WITH

"Aero Build was integral to bringing my vision for my business to life. They were magnificent collaborators and were willing to try my new, creative (crazy?) ideas, and everything turned out fabulous. Also, the Aero Build crew is a lovely group of honest, hard working people, and they were a pleasure to work with."

- Erin Wolff, Owner, Pomelo Grove



FAQ'S

- **WEIGHT OF THE TRAILER?**
 - The trailer will range from 2900lbs to 3000lbs, depending on any additions you may have added to your trailer. This weight does not include any equipment.
- **WHAT IS THE ELECTRICAL CAPACITY OF THE TRAILER?**
 - The electrical capacity is 11,000 watts, 50 amps, 220 volts.
- **HOW LONG DOES IT TAKE TO COMPLETE MY TRAILER?**
 - Our lead time is 4-6 months
- **DO YOU BUILD ACCORDING TO MY LOCAL CODES?**
 - Our trailers are built to meet and pass most standard codes, but clients are required to research their own local codes as well. Talk to one of our reps if there are any special requirements that you may need during a Project Review and Design Call.
- **DOES YOUR TRAILER HAVE A/C AND HEAT?**
 - Yes, we offer a roof-mounted A/C Unit with a Heat Strip.

MOBILE BUSINESS SERIES

Base Model

- 13,500 BTU A/C
- 2 x Service Windows
- Full Plumbing Package (3-Compartment Sink, Hand Wash Sink, Hot Water Heater, Freshwater & Greywater Tanks)
- Ice Well
- 4 x Recessed Lights on dimmer
- Wrap Around Countertops
- Interior Sconce
- 2 x Interior Storage Cabinets
- Commercial Grade TPO Flooring
- Exterior Service Light
- Electronic Trailer Brakes
- Full Moon Hubcaps

13' Trailer \$39,995
16' Trailer \$39,995

Pro Model

- 2 x Exterior Folding Service Shelves
- 2 x Exterior Window Trim
- Logo Package
- Custom Accent wall
- Spare Tire

\$5,000

MOBILE BUSINESS SERIES

Coffee Equipment Package Level I

- Espresso Machine: Nuova Simonelli Appia II, Volumetric 1 Group (110v)
- Espresso Grinder: Eureka Olympus 75e
- Coffee Brewer: Fetco CBS-1231
- Batch Coffee Grinder: Mahlkonig GH2
- Knock Box & Pitcher Rinser
- Micron Filter
- Install & Training Included

\$11,250

Coffee Equipment Package Level II

- Espresso Machine: Nuova Simonelli Appia II, 2 Group (110v or 220v)
- Espresso Grinder: Eureka Olympus 75e
- Coffee Brewer: Fetco CBS-1231
- Batch Coffee Grinder: Mahlkonig GH2
- Knock Box & Pitcher Rinser
- Micron Filter
- Install & Training Included

\$13,750

50%

Down to secure your project

STARTING YOUR BUSINESS JUST GOT EASIER

INTRODUCING OUR NEW FINANCING PARTNER



[APPLY NOW](#)

1 EASY CREDIT APP

A quick & simple online credit application, or single page, allow us to quickly qualify the business with a one-time soft credit check.

2 MULTI-FUNDING OPTIONS

With access to over 25 commercial banks, financial institutions, and private investment sources, we can confidently secure the best financial options, strategies, and solutions for your business needs.

3 BEST FINANCING OFFERS!

Of the many financing offers available, we will always extend the greatest financing options that have the very best financing value at the lowest rate possible upon credit worthiness and approval, all starting at right under 7%.

WHY ARCHER?

As a commercial lending leader nationwide, we provide simple, modern, and competitive financing solutions on equipment, leasing programs, and SMB loans.

Our tailored financial solutions approach gives us the cutting-edge to fund different types of businesses equally such as Start-Ups, Franchises, Non-Profits, Small Businesses, Manufactures, Government Agencies, and Fortune 500 Companies, but always keeping each individual business financial goal in mind throughout the process.

HOW WE DO IT?

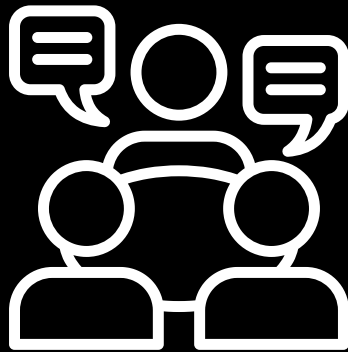
By using the powers of continuous availability and a friendly human touch service, we can quickly identify the best financial strategies and solutions to finance any equipment project and business at any scale within the hour.

LET'S START YOUR BUILD TODAY!

MAKE SURE TO FOLLOW US
@aerobuildco



CONTACT OUR TEAM TODAY!



BOOK A CALL



AERO BUILD

AEROBUILD.CO | PROUDLY MADE IN NASHVILLE, TN